

FCU Specification

Ceiling Cassette 4-Way



Model Name		PLFY-P32VBM-E	PLFY-P40VBM-E	PLFY-P50VBM-E	PLFY-P63VBM-E	PLFY-P80VBM-E	PLFY-P100VBM-E	PLFY-P125VBM-E	
Power Source		1-Phase 220-240V 50Hz							
Cooling Capacity	Btu/hr (*1)	12,300	15,400	19,100	24,200	30,700	38,200	47,800	
	kW (*1)	3.6	4.5	5.6	7.1	9	11.2	14	
Power Input	kW	0.03	0.04		0.05	0.07	0.15	0.16	
Running Current	A	0.22	0.29		0.36	0.51	1	1.07	
Airflow (Low-High)	CFM	388-424-459-494	424-459-494-565		494-530-565-636	565-636-706-777	742-848-953-1024	777-883-989-1059	
Noise Level (low-high)	dB (A)	27-28-29-31	27-28-30-31		28-29-30-32	30-32-35-37	34-37-39-41	35-38-41-43	
Fan Type x Quantity		Turbo Fan x 1							
Fan motor output	kW	0.05				0.12			
Air Filter		PP Honeycomb							
Unit Dimension (HxWxD)	mm	258x840x840						298x840x840	
Panel Dimension (HxWxD)	mm	35x950x950							
Unit Weight	kg	22			23		27		
Panel Weight	kg				6				
Refrigerant		R410A							
Refrigerant Piping (Liquid)	Ø mm	6.35			9.52				
Refrigerant Piping (Gas)	Ø mm	12.70			15.88				
Field Drain pipe diameter	mm	O.D. 32							

Ceiling Cassette 4-Way Compact Size



Model Name		PLFY-P20VCM-E	PLFY-P25VCM-E	PLFY-P32VCM-E	PLFY-P40VCM-E
Power Source		1-Phase 220-240V 50Hz			
Cooling Capacity	Btu/hr (*1)	7,500	9,600	12,300	15,400
	kW (*1)	2.2	2.8	3.6	4.5
Power Input	kW	0.05		0.06	
Running Current	A	0.23		0.28	
Airflow (Low-High)	CFM	283-318-353		283-318-388	
Noise Level (low-high)	dB (A)	28-31-35	28-31-37	29-33-38	30-34-39
Fan Type x Quantity		Turbo Fan x 1			
Fan motor output	kW	0.11	0.015	0.02	
Air Filter		PP Honeycomb			
Unit Dimension (HxWxD)	mm	208x570x570			
Panel Dimension (HxWxD)	mm	20x650x650			
Unit Weight	kg	15.5		17	
Panel Weight	kg	3			
Refrigerant		R410A			
Refrigerant Piping (Liquid)	Ø mm	6.35			
Refrigerant Piping (Gas)	Ø mm	12.70			
Field Drain pipe diameter	mm	O.D. 32			

Ceiling Suspended



Model Name		PCFY-P40VKM-E	PCFY-P63VKM-E	PCFY-P100VKM-E	PCFY-P125VKM-E
Power Source		1-Phase 220-240V 50Hz			
Cooling Capacity	Btu/hr (*1)	15,400	24,200	38,200	47,800
	kW (*1)	4.5	7.1	11.2	14
Power Input	kW	0.04	0.05	0.09	0.11
Running Current	A	0.28	0.33	0.65	0.76
Airflow (Low-High)	CFM	353-388-424-459	494-530-565-636	742-847-918-989	742-847-953-1095
Noise Level (low-high)	dB (A)	29-32-34-36	31-33-35-37	36-38-41-43	36-39-42-44
Fan Type x Quantity		Sirocco fan x2	Sirocco fan x3	Sirocco fan x4	
Fan motor output	kW	0.09	0.095	0.16	
Air Filter		PP Honeycomb (longlife)			
Unit Dimension (HxWxD)	mm	230x960x680	230x1280x680	230x1600x680	
Unit Weight	kg	24	32	36	38
Refrigerant		R410A			
Refrigerant Piping (Liquid)	Ø mm	6.35	9.52		15.88
Refrigerant Piping (Gas)	Ø mm	12.7	15.88		
Field Drain pipe diameter	mm	O.D. 26			

Wall Mounted

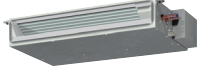


Model Name		PKFY-P15BM-E	PKFY-P20BM-E	PKFY-P25BM-E	PKFY-P32BM-E	PKFY-P40BM-E	PKFY-P50BM-E	PKFY-P63BM-E	PKFY-P100BM-E
Power Source		1-Phase 220-240V 50Hz							
Cooling Capacity	Btu/hr (*1)	5,800	7,500	9,600	12,300	15,400	19,100	24,200	38,200
	kW (*1)	1.7	2.2	2.8	3.6	4.5	5.6	7.1	11.2
Power Input	kW	0.04				0.05		0.08	
Running Current	A	0.2		0.4		0.37		0.58	
Airflow (Low-High)	CFM	173-177-184-187	173-184-198-208		318-353-388	318-371-424	318-371-424	565-706	706-918
Noise Level (low-high)	dB (A)	29-31-32-33	29-31-34-36		34-37-41	34-38-41	34-39-43	39-45	41-49
Fan Type x Quantity		Line Flow Fan x1							
Fan motor output	kW	0.017			0.03		0.056		
Air Filter		PP Honeycomb							
Unit Dimension (HxWxD)	mm	295x815x225			295x898x249		365x1170x295		
Unit Weight	kg	10			13		21		
Refrigerant		R410A							
Refrigerant Piping (Liquid)	Ø mm	6.35				9.52		15.88	
Refrigerant Piping (Gas)	Ø mm	12.70				15.88			
Field Drain pipe diameter	mm	I.D. 16							

*1 Cooling/heating capacity indicates the maximum value at operation under the following condition.
Cooling Indoor : 27°C(81°F)DB/19°C(66°F)WB. Outdoor : 35°C(95°F)DB

FCU Specification

Ceiling Ducted Slim Type



Model Name		PEFY-P15V Ms1(L)-E	PEFY-P15 VMs1(L)-E	PEFY-P15 VMs1(L)-E	PEFY-P15 VMs1(L)-E	PEFY-P15 VMs1(L)-E	PEFY-P15 VMs1(L)-E	PEFY-P15 VMs1(L)-E
Power Source		1-Phase 220-240V 50Hz						
Cooling Capacity	Btu/hr(*1) kW(*1)	5,800 1.7	7,500 2.2	9,600 2.8	12,300 3.6	15,400 4.5	19,100 5.6	24,200 7.1
Power Input	kW	0.05		0.06	0.07		0.09	
Running Current	A	0.42	0.47	0.5		0.56	0.67	0.72
Airflow (Low-High)	CFM	176-212-247	194-22-282	194-247-317	212-282-353 5-15-35-50	282-335-388	335-388-459	424-494-583
External Static Pressure	Pa							
Noise Level (Low-High)	dB(A)	22-24-28	23-25-29	24-26-30	24-27-32	28-30-33	30-32-35	30-33-36
Fan Type x Quantity		Sirocco fan x2			Sirocco fan x3			Sirocco fan x4
Fan motor output	kW	0.096						
Air Filter		PP Honeycomb Fabric						
Unit Dimension (HxWxD)	mm	200x790x700			20	200x990x700		200x1,190x700
Unit Weight	kg	19			20	24		28
Refrigerant		R410A						
Refrigerant Piping (Liquid)	Ø mm				6.35		9.52	
Refrigerant Piping (Gas)	Ø mm				12.70		15.88	
Field drain pipe diameter	mm	O.D. 32						

Ceiling Ducted Middle Static



Model Name		PEFY-P20VMA(L)-E	PEFY-P25VMA(L)-E	PEFY-P32VMA(L)-E	PEFY-P40VMA(L)-E	PEFY-P40VMA(L)-E
Power Source		1-Phase 220-240V 50Hz				
Cooling Capacity	Btu/hr(*1) kW(*1)	7,500 2.2	9,600 2.8	12,300 3.6	15,400 4.5	19,100 5.6
Power Input	kW	0.06		0.07	0.09	0.11
Running Current	A	0.53		0.55	0.64	0.74
Airflow (Low-High)	CFM	212-265-300		265-318-371	353-424-494	424-512-600
External Static Pressure	Pa	20-35-50-70-100-150				
Noise Level (Low-High)	dB(A)	26-28-29		28-30-34		28-32-35
Fan Type x Quantity		Sirocco Fan x1				
Fan motor output	kW	0.085				
Air Filter		PP honeycomb fabric				
Unit Dimension (HxWxD)	mm	250x700x732			250x900x732	
Unit Weight	kg	23			26	
Refrigerant		R410A				
Refrigerant Piping (Liquid)	Ø mm	6.35				
Refrigerant Piping (Gas)	Ø mm	12.70				
Field drain pipe diameter	mm	O.D. 32				

Model Name		PEFY-P63VMA(L)-E	PEFY-P71VMA(L)-E	PEFY-P80VMA(L)-E	PEFY-P100VMA(L)-E	PEFY-P125VMA(L)-E	PEFY-P140VMA(L)-E
Power Source		1-Phase 220-240V 50Hz					
Cooling Capacity	Btu/hr(*1) kW(*1)	24,200 7.1	27,300 8.0	30,700 9.0	38,200 11.2	47,800 14	54,600 16
Power Input	kW	0.12	0.14		0.24	0.34	0.36
Running Current	A	1.01	1.15		1.47	2.05	2.21
Airflow (Low-High)	CFM	477-565-671	512-636-742		812-989-1,165	989-1,201-1,412	1,042-1,254-1,483
External Static Pressure	Pa	20-35-50-70-100-150					
Noise Level (Low-High)	dB(A)	29-32-36	30-34-38		32-37-41	35-40-44	36-41-45
Fan Type x Quantity		Sirocco fan x2					
Fan motor output	kW	0.121			0.244		
Air Filter		PP Honeycomb Fabric					
Unit Dimension (HxWxD)	mm	250x1,100x732			250x1,400x732		250x1,600x732
Unit Weight	kg	32			42		46
Refrigerant		R410A					
Refrigerant Piping (Liquid)	Ø mm	9.52					
Refrigerant Piping (Gas)	Ø mm	15.88					
Field drain pipe diameter	mm	O.D. 32					

Ceiling Ducted High Static



Model Name		PEFY-P40VMH	PEFY-P50VMH-E	PEFY-P63VMH-E	PEFY-P71VMH-E	PEFY-P80VMH-E	PEFY-P100VMH-E	PEFY-P125VMH-E	PEFY-P140VMH-E
Power Source		1-Phase 220-240V 50Hz							
Cooling Capacity	Btu/hr(*1) kW(*1)	15,400 4.5	19,100 5.6	24,200 7.1	27,300 8	30,700 9	38,200 11.2	47,800 14	54,600 16
Power Input	kW	0.23		0.3	0.33	0.4	0.58		0.59
Running Current	A	1.06		1.38	1.51	1.83	2.66		2.7
Airflow (Low-High)	CFM	353-494		477-671	547-777	636-883	936-1342	989-1413	
External Static Pressure	Pa	100-150-200							
Noise Level (Low-High)	dB(A)	27-34		32-38	32-39	35-41	34-42		
Fan Type x Quantity		Sirocco Fan x1				Sirocco Fan x2			
Fan motor output	kW	0.08		0.12	0.14	0.18	0.26		
Air Filter		Synthetic fiber unwoven cloth filter (long life)							
Unit Dimension (HxWxD)	mm	380x750x900		380x1,000x900			380x1,200x900		
Unit Weight	kg	44	45	50			70		
Refrigerant		R410A							
Refrigerant Piping (Liquid)	Ø mm	6.35						9.52	
Refrigerant Piping (Gas)	Ø mm	12.7						15.88	
Field drain pipe diameter	mm	O.D. 32							
Airflow (Low-High)	CMM CFM	58 2,048		72 2,543		50.0-61.0-72.0 1,766-2,154-2,542		58.0-71.0-84.0 2,048-2,507-2,966	
External Static Pressure	Pa	130-260		54		50-100-150-200-250			
Noise Level (Low-High)	dB(A)	47		54		36-39-43		39-42-46	
Fan Type x Quantity		Sirocco fan x2							
Fan motor output	kW	0.76		1.08		0.87			
Air Filter		Synthetic fiber unwoven cloth filter (long life)							
Unit Dimension (HxWxD)	mm	470x1,250x1,120							
Unit Weight	kg	100				97		100	
Refrigerant		R410A							
Refrigerant Piping (Liquid)	Ø mm	9.52							
Refrigerant Piping (Gas)	Ø mm	19.05		22.2		19.05		22.2	
Field drain pipe diameter	mm	O.D. 32							



CU Specification

Model Name		PUHY-P200YHA	PUHY-P250YHA	PUHY-P300YHA	PUHY-P350YHA	PUHY-P400YHA	PUHY-P450YHA	
Power Source		3-Phase 380-415V 50Hz						
Cooling Capacity	Btu/hr(*1)	76,400	95,500	114,300	136,500	153,500	170,600	
	KW(*1)	22.4	28.0	33.5	40.0	45.0	50.0	
	COP	3.91	3.62	3.69	3.57	3.40	3.00	
External Finish	Unit	Pre-coated galvanized steel sheets <Munsell 3.0Y 7.8/11>						
Power Input	kW	5.72	7.73	9.07	11.2	13.23	16.66	
Running Current	A	8.8	11.9	14	17.3	20.4	25.7	
Compressor	Type	Inverter Scroll Hermetic Compressor						
(Motor Output)	kW	5.4	6.7	8.2	10.3	10.5	12.0	
Airflow	cmm	185		185		225		
	cfm	6,532		6,532		7,945		
Fan Type x Quantity		Propeller fan x 1						
Fan motor output	kW	0.92 x 1						
Dimension (HxWxD)	mm	1,650x920x760			1,650x1,220x760			
Weight	kg	185	200	215	245			
Refrigerant		R410A						
Refrigerant Piping (Liquid)	Ø mm	9.52			12.70		15.88	
Refrigerant Piping (Gas)	Ø mm	19.05	22.20		28.58			

*1,*2 Nominal conditions.

model name		PUHY-P500YSHA	PUHY-P550YSHA	PUHY-P600YSHA	PUHY-P650YSHA	PUHY-700YSHA	PUHY-750YSHA	PUHY-800YSHA	PUHY-P850YSHA
	Combine Unit	P250YHA	P250YHA	P250YHA	P300YHA	P350YHA	P350YHA	P350YHA	P400YHA
	Unit	P250YHA	P300YHA	P350YHA	P350YHA	P350YHA	P400YHA	P450YHA	P450YHA
Power Source		3-Phase 380-415V 50Hz							
Cooling Capacity	Btu/hr(*1)	191,100	215,000	235,400	249,100	273,000	290,000	307,100	327,600
	KW(*1)	56.0	63.0	69.0	73.0	80.0	85.0	90.0	96.0
	COP	3.40	3.43	3.68	3.51	3.56	3.39	3.25	3.10
External Finish	Unit	Pre-coated galvanized steel sheets <Munsell 3.0Y 7.8/11>							
Power Input	kW	16.47	18.36	18.75	20.79	22.47	25.07	27.69	29.82
Running Current	A	25.4	28.3	28.9	32.1	34.7	38.7	42.8	47.7
Compressor	Type	Inverter Scroll Hermetic Compressor							
(Motor Output)	kW	6.7 + 6.7	6.7 + 8.2	6.7 + 10.3	8.2 + 10.3	10.3 + 10.3	10.3 + 10.5	10.3 + 12.0	10.5 + 12.0
Airflow	cmm	185 + 185		185 + 225		225 + 225		225 + 225	
	cfm	6,532 + 6,532		6,532 + 7,945		7,945 + 7,945			
Fan Type x Quantity		Propeller (1+1)							
Fan motor output	kW	0.92 x 0.92							
Dimension (HxWxD)	mm	(1,650x920x760) + (1,650x920x760)		(1,650x920x760) + (1,650x1,220x760)		(1,650x1,220x760) + (1,650x1,220x760)			
Weight	kg	200 + 200	200 + 215	200 + 245	245 + 245	245 + 245			
Refrigerant		R410A							
Refrigerant Piping (Liquid)	Ø mm	15.88			19.05				
Refrigerant Piping (Gas)	Ø mm	28.58			34.93		4.1		

*1,*2 Nominal conditions.

Model Name		PUHY-P950YSHA	PUHY-P1000YSHA	PUHY-P1050YSHA	PUHY-P1100YSHA	PUHY-P1150YSHA	PUHY-P1200YSHA
	Combine Unit	P250YHA	P250YHA	P300YHA	P350YHA	P350YHA	P350YHA
	Unit	P300YHA	P300YHA	P350YHA	P400YHA	P400YHA	P450YHA
Power Source		3-Phase 380-415V 50Hz					
Cooling Capacity	Btu/hr(*1)	368,000	385,600	402,600	423,100	443,600	464,000
	KW(*1)	108.0	113.0	118.0	124.0	130.0	136.0
	COP	3.52	3.48	3.48	3.46	3.30	3.26
External Finish	Unit	Pre-coated galvanized steel sheets <Munsell 3.0Y 7.8/11>					
Power Input	kW	30.68	32.47	33.9	35.83	39.39	41.71
Running Current	A	47.4	50.1	52.4	55.3	60.8	64.4
Compressor	Type	Inverter Scroll Hermetic Compressor					
(Motor Output)	kW	6.7 + 8.2 + 10.5	8.2 + 8.2 + 10.5	8.2 + 10.3 + 10.5	10.3 + 10.3 + 10.5	10.3 + 10.3 + 12.0	10.3 + 10.5 + 12.0
Airflow	cmm	185 + 185 + 225		185 + 225 + 225		225 + 225 + 225	
	cfm	6,532 + 6,532 + 7,945		6,532 + 7,945 + 7,945		7,945 + 7,945 + 7,945	
Fan Type x Quantity		Propeller fan (1+1+1)					
Fan motor output	kW	0.92 + 0.92 + 0.92					
Dimension (HxWxD)	mm	(1,650x920x760) + (1,650x1,220x760) + (1,650x1,220x760)		(1,650x920x760) + (1,650x1,220x760) + (1,650x1,220x760)		(1,650x1,220x760) + (1,650x1,220x760) + (1,650x1,220x760)	
Weight	kg	200 + 215 + 245	215 + 215 + 245	215 + 215 + 245			245 + 245 + 245
Refrigerant		R410A					
Refrigerant Piping (Liquid)	Ø mm	19.05					
Refrigerant Piping (Gas)	Ø mm	41.28					

*1,*2 Nominal conditions.

Cooling	Indoor	Outdoor	Pipe Length	Level Difference
	27C DB/19C WB (81C DB/66F WB)	35C DB(95F DB)	7.5m (24-9/16ft)	0m (0ft)

* Nominal condition *1,*2 are subject to JIS B8615-2.

* Due to continuing improvement, above specification may be subject to change without prior notice.